



Clwb Hwyllo PWLLHELI Sailing Club



Racing Challenges 2020

With the easing of restrictions allowing local access to boats, we would like to offer an additional race to our “self-managed” race portfolio, and now offer the following challenges for 2020.

Challenge 1 - Tremadog Triangle

A 6-mile race in Tremadog bay, which takes around an hour for Racing boats and a little longer for Cruiser's.

PSC Start - PSC 2 - PSC 8 - PSC 10 - PSC Finish

The start / finish line is the PSC club start line at Gimlet Rock – a transit from the “Dwr Cymru” building and the Yellow Outer Distance Mark (ODM) – see the racing marks diagram [here](#)

This triangle can be completed in either direction. Take own start and finish times. Trophies awarded for the fastest IRC and NHC boats. If you don't have a rating, we will sort out an NHC rating for you. The current record is 42 minutes (Jackknife)

The racing marks should be laid and on station the week commencing 15th June 2020

Challenge 2 – Commodores Challenge

A race around St Tudwals Islands and back, which is approximately 12 miles. Note St Tudwals Islands as a racing mark, includes both Islands and “Carreg Y Trai” Lateral Buoy which must be passed on its East side. Again, you can round the St Tudwals Mark in either direction, as long as all three features (St Tuds East/West/Carreg Y Trai) are rounded as one mark

PSC Start - St Tudwals - PSC Finish

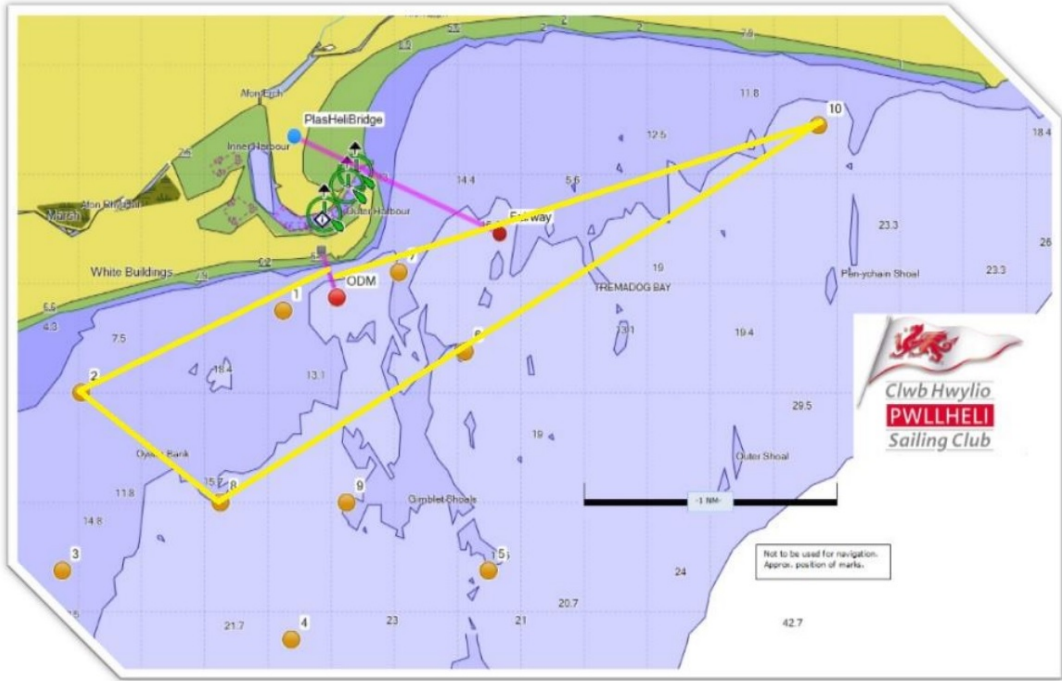
The racing marks are not required for this challenge.

Details of racing marks and other useful racing resource can be found [here](#)
Again, record own times and trophies will be awarded for both IRC and NHC classes.

For both challenges, email your name and boat details with start and finish times to: racing@pwllhelisailingclub.co.uk and we will update the leader boards.

CHPSC Racing Committee June 2020

CHPSC - 2020 Tremadog Triangle



12/06/2020

2020 Commodores Challenge

